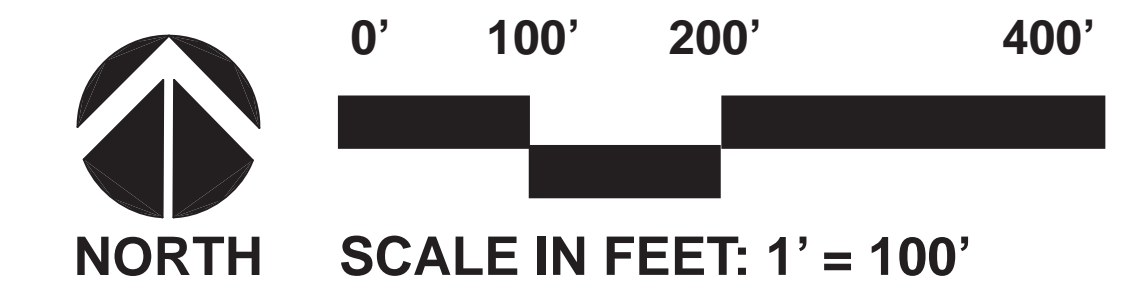




HARTSHORN OVERALL EXISTING CONDITIONS PLAN
CONCEPTUAL PARK PLANNING
CITY OF MUSKEGON, MICHIGAN



DATE
05.31.2024
PROJECT NO.
2220





1
 POINTE IS POPULAR FISHING LOCATION, BUT LACKS ACCESSIBILITY



2
 EXISTING SHORELINE HAS RECENTLY BEEN STABILIZED WITH RIP RAP



3
 EXISTING RESTROOM BUILDING REQUIRES REPAIRS OR REPLACEMENT



4
 EXISTING SHEET PILE WALL



5
 INFORMAL PICNIC AREA HAS BARRIER FREE PARKING, BUT LACKS CONNECTION TO TABLES OR FISHING



6
 EXISTING PUBLIC BOAT LAUNCH



7
 CONVENIENCE DOCKS FOR IN/OUT SERVICE



8
 MUSKEGON LAKESHORE BIKE TRAIL. IT WAS OBSERVED THAT BIKERS USE STREET INSTEAD OF TRAIL.



9
 BOAT TRAILER PARKING



10
 EXISTING PARK ENTRANCE LACKS SIGNAGE AND CLEAR DIRECTIONS TO PUBLIC WATER ACCESS

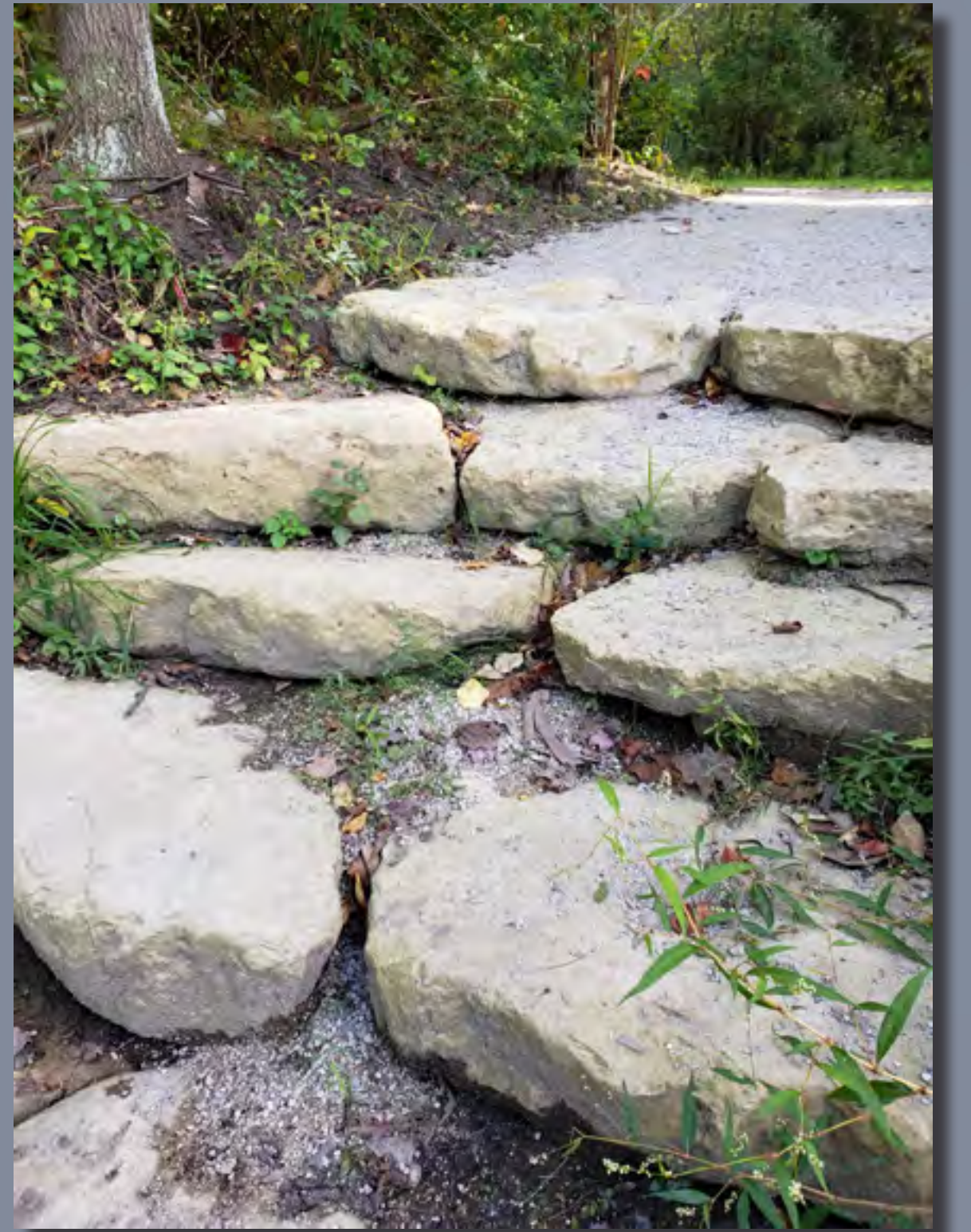
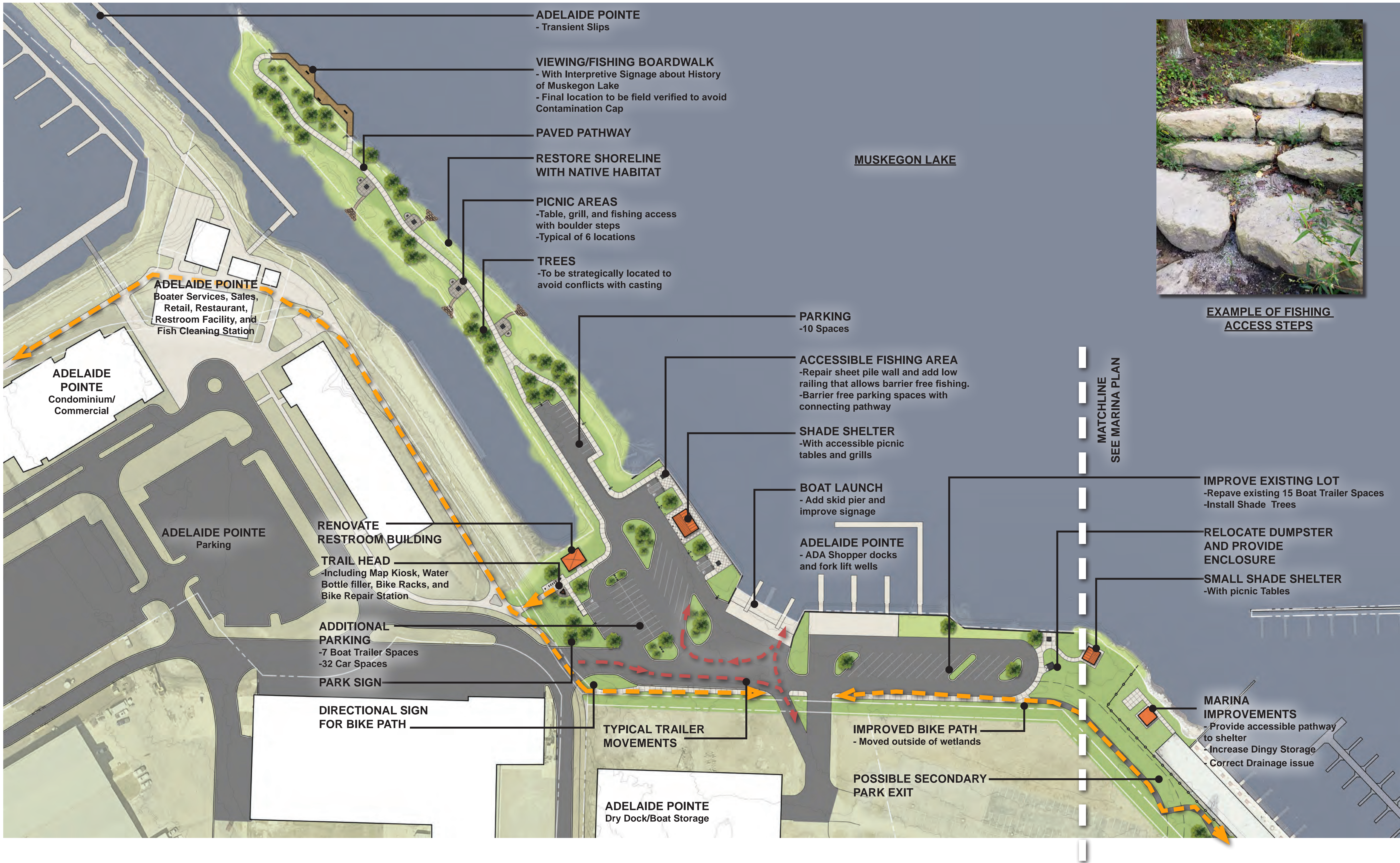


HARTSHORN PARK EXISTING CONDITIONS PLAN CONCEPTUAL PARK PLANNING CITY OF MUSKEGON, MICHIGAN



DATE
 05.31.2024
 PROJECT NO.
 Z220





EXAMPLE OF FISHING ACCESS STEPS



HARTSHORN PARK REVISED CONCEPT PLAN
CONCEPTUAL PARK PLANNING
CITY OF MUSKEGON, MICHIGAN



0' 50' 100' 200'
SCALE IN FEET: 1' = 50'

DATE
12.17.2024
PROJECT NO.
2220





EXISTING PLAYGROUND
-Equipment is old and should be replaced.



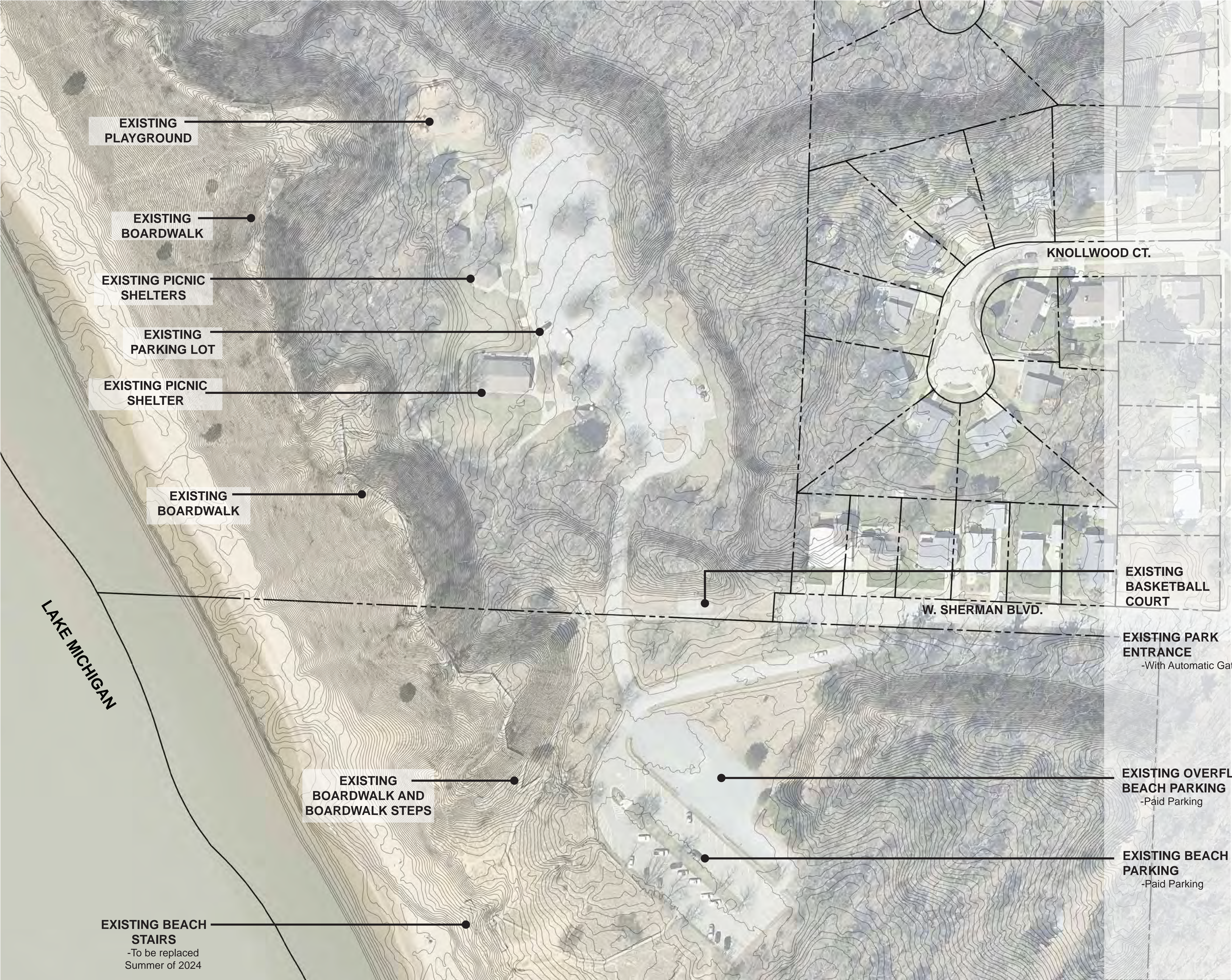
EXISTING BASKETBALL COURT
-Court is small and paving in poor condition.



EXISTING BOARDWALK
-Boardwalk is a extremely popular destination, but is aging and in need of repairs.



EXISTING BEACH ACCESS
-Stairs have recently been replaced.



KRUSE PARK EXISTING CONDITIONS PLAN
CONCEPTUAL PARK PLANNING
CITY OF MUSKEGON, MICHIGAN



DATE
11.05.2024
PROJECT NO.
2220









EXISTING BANDSHELL

-Building is in need of renovation or replacement.



EXISTING PLAYGROUND

-Newly replaced playground, lacks diversity of play opportunities.



EXISTING TENNIS COURTS

-Concrete courts need to be replaced and/or resurfaced.



DISC GOLF HOLE

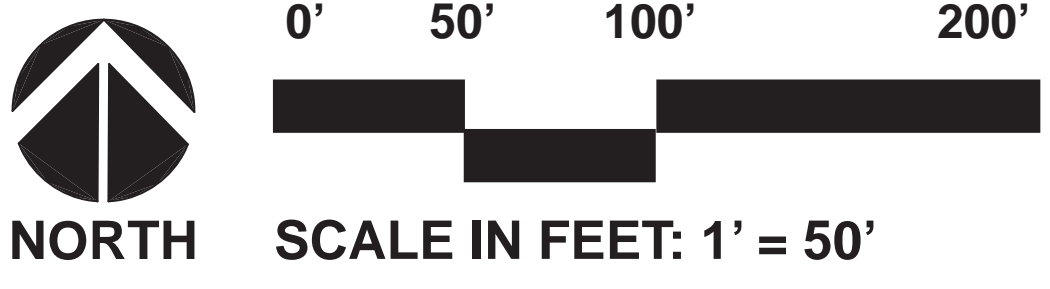
-Recommend boardwalk stairs in steep areas with eroded slopes.



MCGRAFT PARK EXISTING CONDITIONS PLAN

CONCEPTUAL PARK PLANNING

CITY OF MUSKEGON, MICHIGAN



DATE
05.15.2024
PROJECT NO.
2220





GENERAL LAWN AND IRRIGATION IMPROVEMENTS

-Options for improvement include reseeding with shade tolerant mix, repairing irrigation, removing some lawn and install shade tolerant groundcover

BOARDWALK STEPS FOR DISC GOLF

-To prevent soil erosion on steep slopes

EXISTING COMMUNITY BUILDING

-Newly renovated

BOARDWALK STEPS FOR DISC GOLF

-To prevent soil erosion on steep slopes

EXISTING PARKING LOT

CRUSHED STONE WALKING PATH

EXISTING SOFTBALL FIELD TO REMAIN

-Improve irrigation

BOARDWALK STEPS FOR DISC GOLF

-To prevent soil erosion on steep slopes

EXISTING FOOT BRIDGE

-Recently reconstructed

FUTURE TRAIL CONNECTION TO CAMPBELL PARK

IMPROVED BARRIER FREE PARKING

STAGE

-Renovate or replace pending cost

ACCESSIBLE RAMP

-Including accessible seating areas

FOOD TRUCK PLAZA

-Including decorative paving, lighting, and electrical pedestals

GAME AREA

-Including ping pong table, curling table, and renovated shuffle board courts

PLAYGROUND

-Expand existing with swings and accessible spinner. Also include small shade shelter with seating

LARGE GROUP SHELTER

-Accessible picnic tables, grills, litter containers, and lighting

PICKLEBALL COURTS

-12 Post Tension Concrete courts

TENNIS COURTS

-Renovate or replace 4 courts

EXISTING BASKETBALL COURT TO REMAIN

EXISTING CORN HOLE BOARDS TO REMAIN

IMPROVED ENTRANCE PLANTINGS

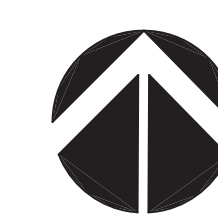
-Include hardy perennials that require minimal water



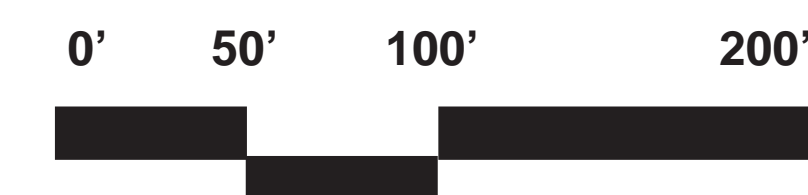
MCGRIFT PARK CONCEPT PLAN ENLARGEMENT

CONCEPTUAL PARK PLANNING

CITY OF MUSKEGON, MICHIGAN



NORTH



SCALE IN FEET: 1' = 50'

DATE
05.15.2024
PROJECT NO.
2220





EXISTING BOAT LAUNCH

-Recommend cap for sheet pile wall.



DIRT TRAIL TO REGIONAL BIKE TRAIL

-Great connection to regional trail, but could be improved for barrier free accessibility.



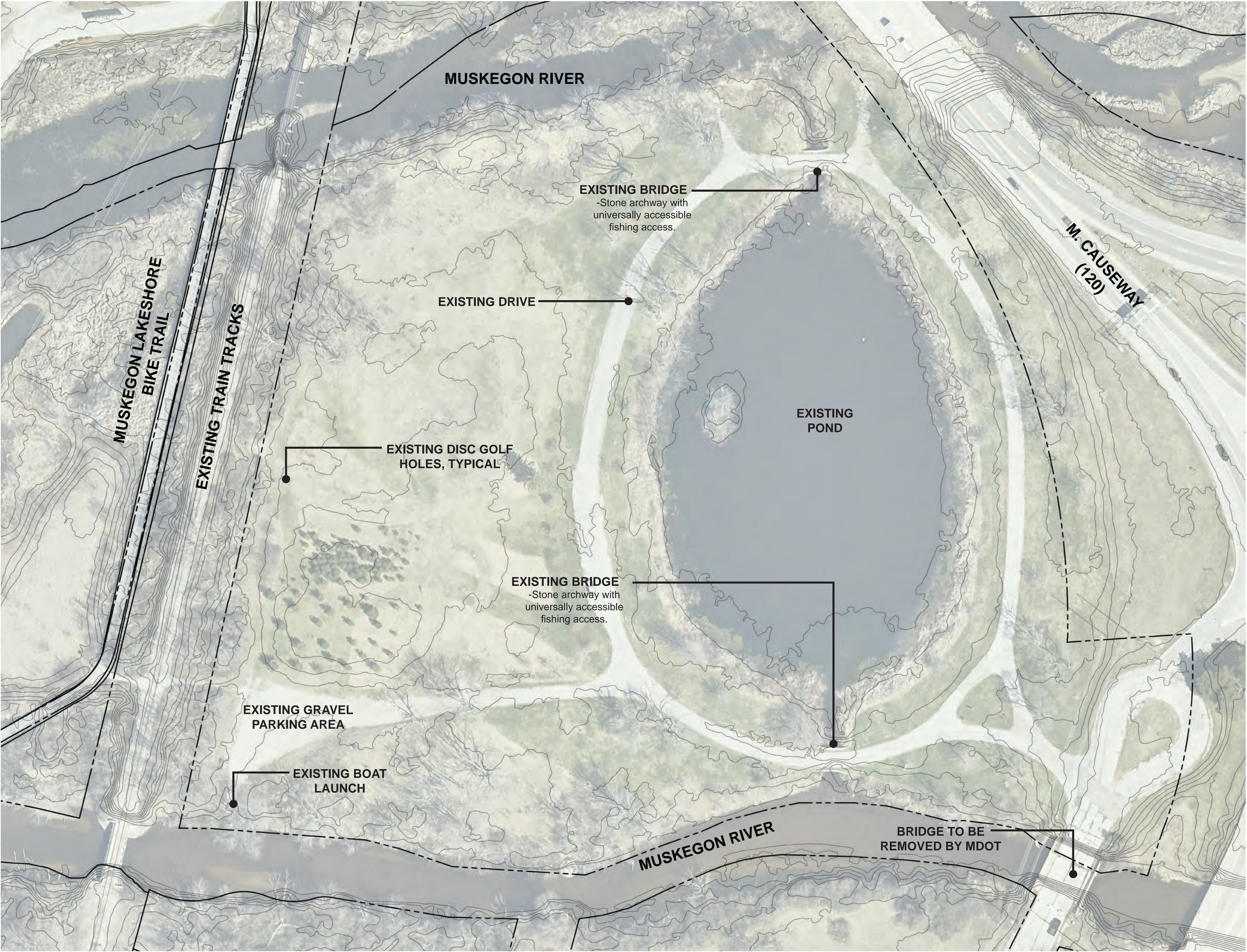
TYPICAL DISC GOLF HOLE

-Tee boxes are overgrown and should be replaced with concrete pads.

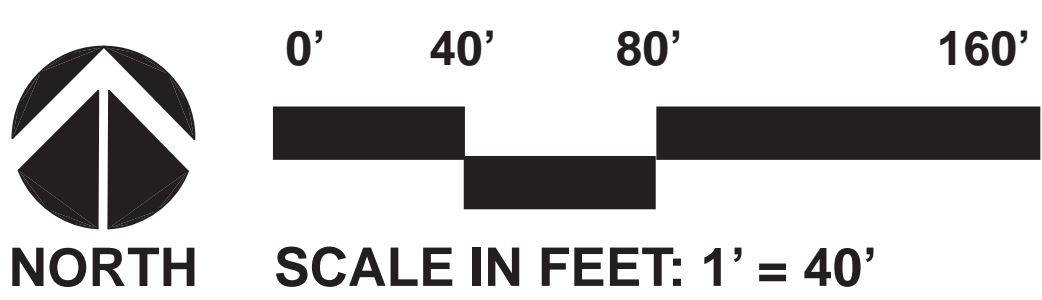


TYPICAL BRIDGE AT POND OUTLETS

-Bridges have charming stone work and historic aesthetic.



RICHARDS PARK EXISTING CONDITIONS PLAN
CONCEPTUAL PARK PLANNING
CITY OF MUSKEGON, MICHIGAN



DATE
11.05.2024
PROJECT NO.
2220

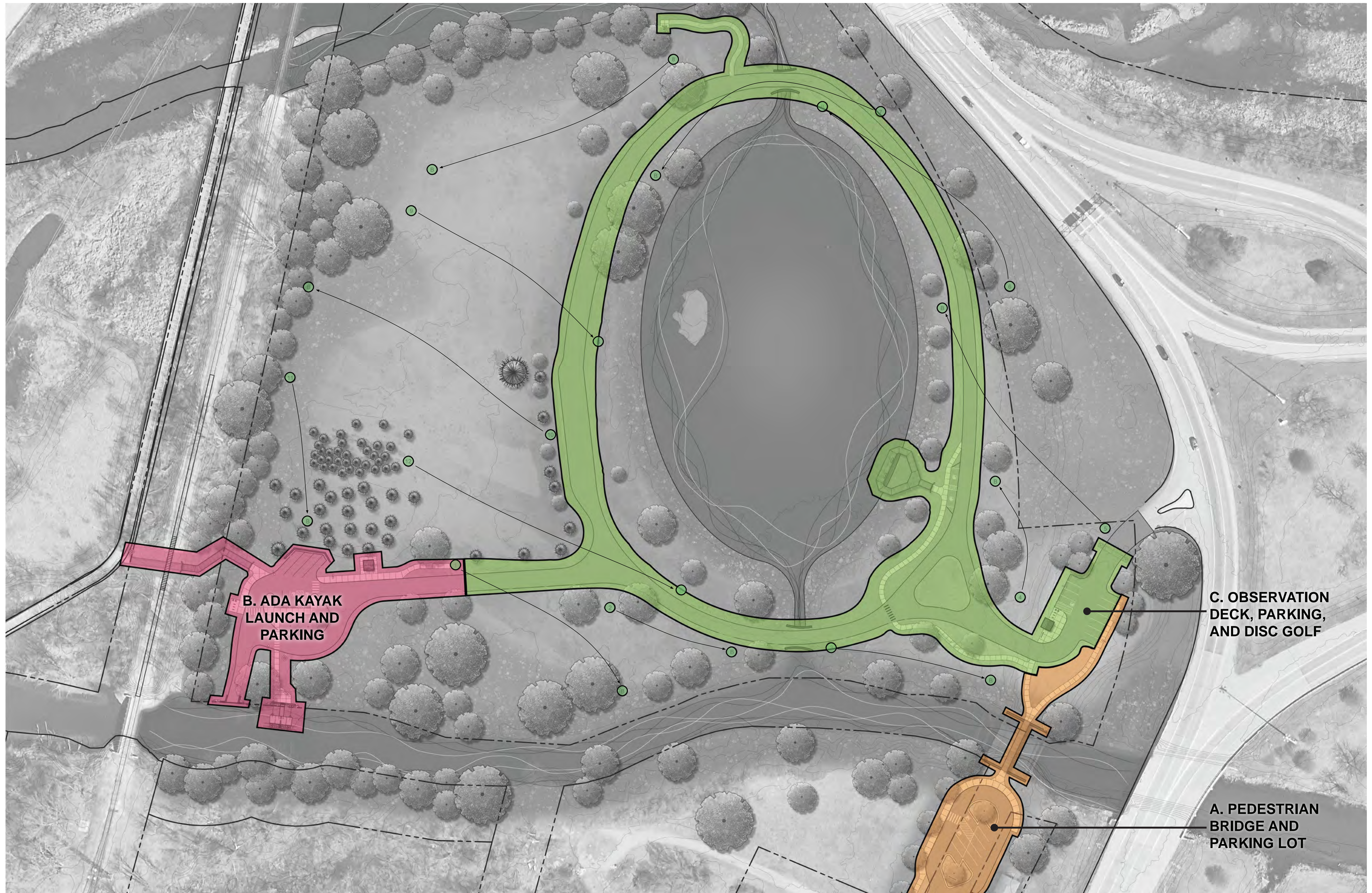


PHASE 1: Located inside the red dashed line.



- RIVERFRONT SEATING AREA / BIRD WATCHING**
 - With crushed stone pathway
- EXISTING BRIDGE**
 - Stone archway with universally accessible fishing access
- EXISTING DRIVE TO BE RE-PAVED**
- EXISTING NATIVE GRASSES TO REMAIN**
- OBSERVATION DECK**
 - Bench Seating
- BARRIER FREE PARKING**
 - 2 Spaces
- CONCRETE PATHWAY**
- ENTRANCE / GATEWAY FEATURE**
 - Park Signage
- PROPOSED PARKING**
 - 11 Spaces, with solar lighting
 - Adjust disc golf holes accordingly
- VAULT TOILET**
 - Universally accessible with connecting pathway and litter receptacles, bike rack, and signage
- PROPOSED PEDESTRIAN BRIDGE**
 - Utilizing existing abutments if possible
- PROPOSED PARKING**
 - 9 Spaces including 2 barrier free spaces, with connecting pathway
 - Requires purchasing land and MDOT approval
- PARK SIGN**

- EXISTING DISC GOLF HOLES, TYPICAL**
 - Provide new tee boxes and improved signage
- IMPROVED CONNECTION TO BIKE TRAIL**
 - Includes accessible crossing at railroad trails boardwalk ramp not to exceed 5%
 - Some existing vegetation to be cleared for views to bike trail
 - Bike trail signage
- BIKE RACK AND LITTER RECEPTACLES**
- IMPROVED PARKING AREA**
 - 4 trailer spots and 4 standard spaces with barrier free parking and solar lighting
- EXISTING BOAT LAUNCH**
 - Improve with cap on sheet pile wall, rip rap stabilization at shore, and dredging
- ACCESSIBLE KAYAK LAUNCH**
 - Includes abutment wall
- PICNIC SHELTER**
 - 12 X 12 with single ADA accessible table



**B. ADA KAYAK
LAUNCH AND
PARKING**

**C. OBSERVATION
DECK, PARKING,
AND DISC GOLF**

**A. PEDESTRIAN
BRIDGE AND
PARKING LOT**